



**128**  
**S. TRYON**

---

FIRST CITIZENS  
BANK PLAZA

# UPTOWN OFFICE REIMAGINED

---

128 S Tryon's retrofit includes an energized lobby, new retail amenities, a new tenant hub, lockers and showers. Tenant upfit options include an exposed ceiling, balconies and vibrant layouts.

Already boasting an excellent Tryon Street address, the redesigned First Citizens Bank Plaza will bring an office environment to a coveted location. A prominent figure in the Charlotte skyline at 23 stories tall, the building will continue to offer panoramic views and close proximity to the endless amenities and culture of uptown.

---



A NEW LOBBY THAT

# AWAKENS THE SENSES



A NEW TENANT HUB THAT INSPIRES

# CONNECTIVITY









Elevator lobby improvements that include Destination Elevator technology



Upgraded restroom facilities



# LET'S PLAY BALL

---

Full floor and large block availabilities offer coveted possibilities in the heart of Charlotte

Situated on energetic Tryon Street, First Citizens Bank Plaza is just two blocks from a Lynx Lightrail station, steps away from Romare Bearden Park, a short walk to Bank of America Stadium, Spectrum Center, Truist Field and today's hottest restaurants.

## AMENITY HIGHLIGHTS

- Tenant hub offering interconnectivity
  - Bicycle room
  - Close proximity to parking
  - Lockers/showers
-

**128**  
S. TRYON



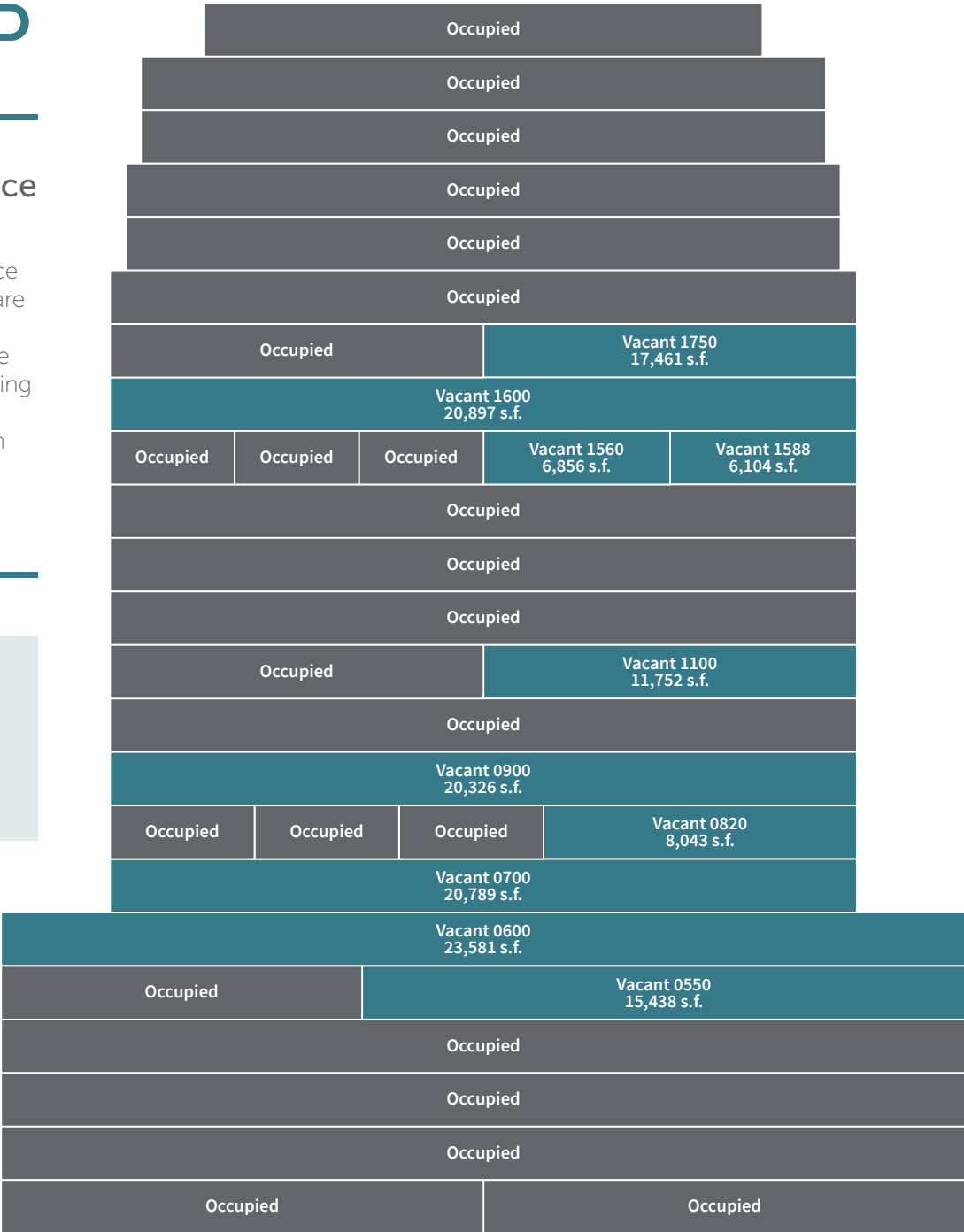
# BUILDING STACK UP

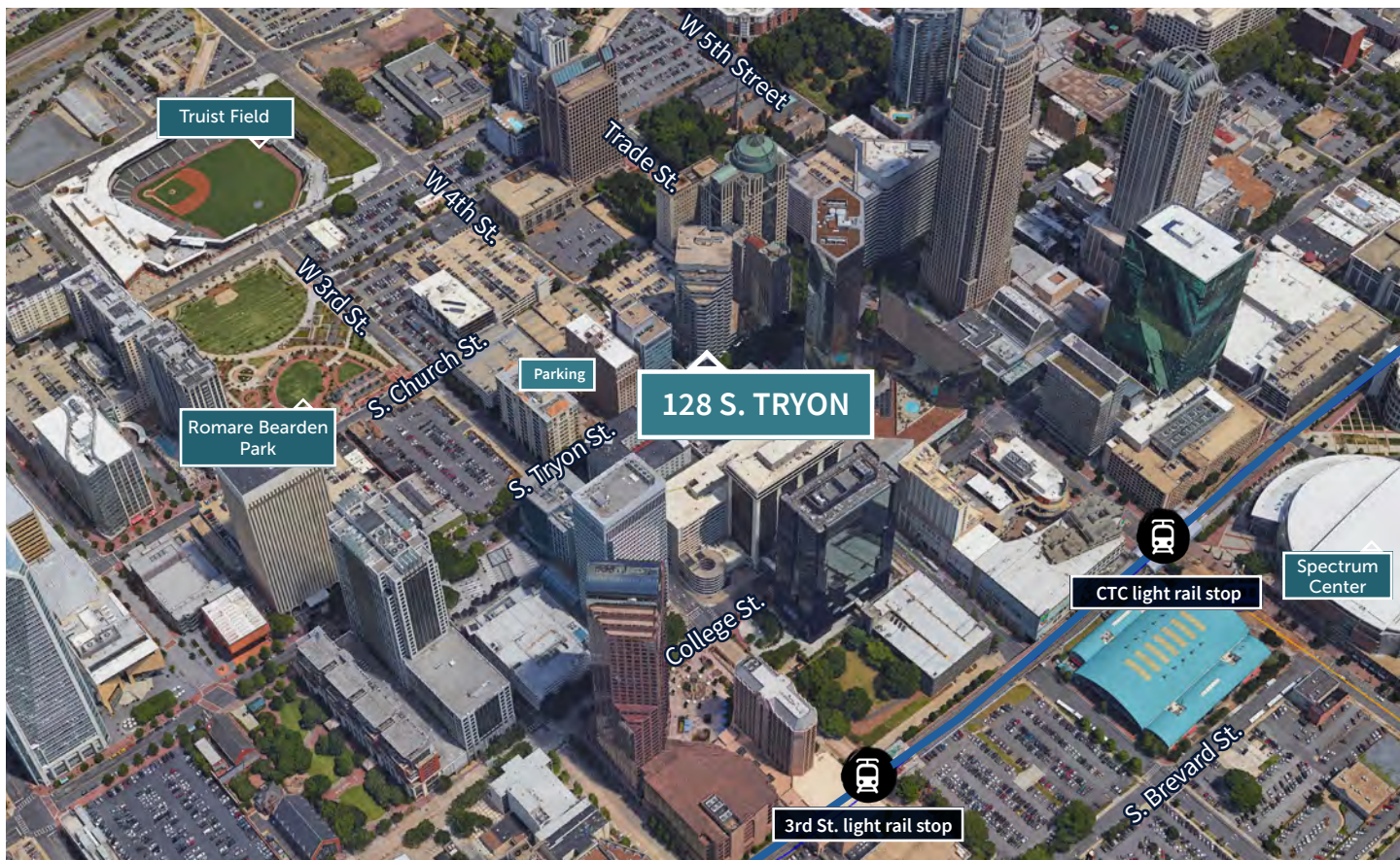
## 23 floors of **Class A Office**

First Citizens Bank Plaza features 477,000 s.f. of Class A Office space with 3,000-182,000 rentable square feet available. Floor plates range from 18,000 to 25,000 s.f. and the attached parking deck offers parking in excess of 1 car per 1,000 s.f. Big Block opportunities along with several full-floor and multi-tenant options are available for lease.

### Full floors available

Flexibility with contiguous blocks of space





## Hotels

Hilton Garden Inn	Residence Inn
The Ritz-Carlton	Fairfield Inn
Hilton Center City	Hyatt Place
The Westin	Charlotte Marriott
Sheraton	The Ivey's Hotel
Holiday Inn	
Hyatt House	
DoubleTree	
Omni	
Embassy Suites	
Hampton Inn	
Le Meridien	
Courtyard by Marriott	

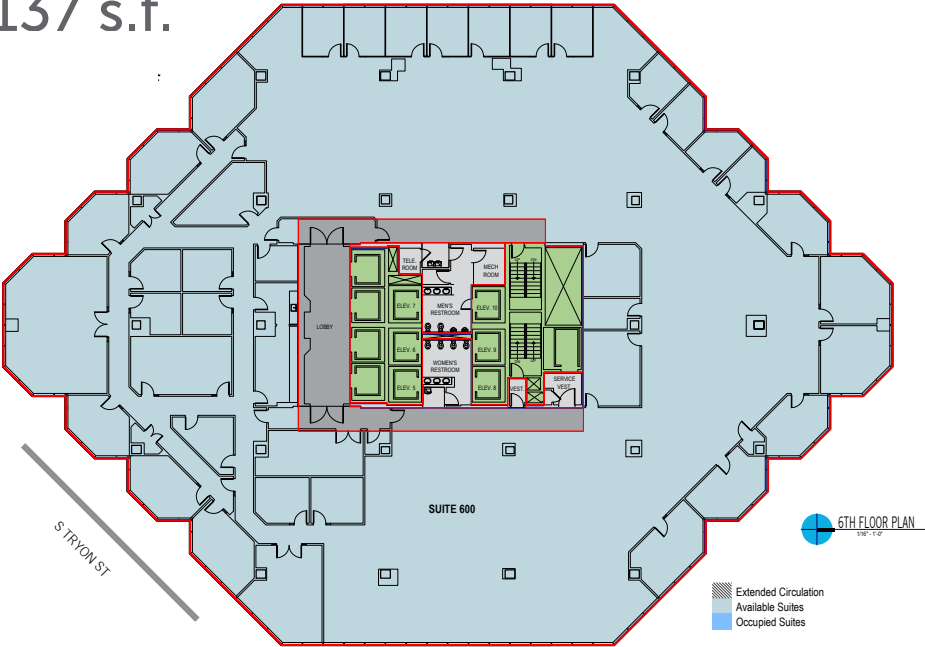
## Acclaimed restaurants

Capital Grill	The King's
Halcyon	Kitchen
204 North	Fahrenheit
Sea Level	Aria
Mimosa Grill	Cowbell
Stoke Charlotte	The Asbury
Bernadin's	Wooden Vine
Ruth's Chris	Haymaker
Rooster's	La Belle Helene
5 Church	Grand Bohemian
Essex	restaurants
Cellar at	Parliament Coffee
Duckworth's	Angeline's
Dandelion Market	Merchant & Trade

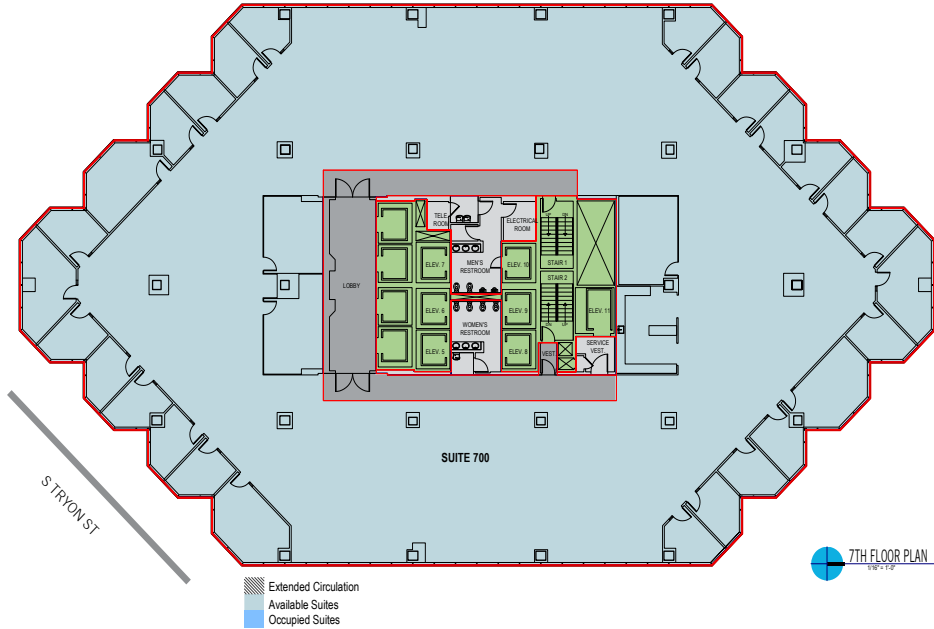
## Sports

Knights - Truist Field  
 Panthers - BofA Stadium  
 Hornets - Spectrum Center

Suite 600 - 20,137 s.f.



Suite 700 - 20,245 s.f.



# Suite 1600 - 20,897 s.f.







10-22

---

**Charlotte**

4201 Congress Street, Suite 300  
Charlotte, North Carolina 28209  
tel +1 704 943 2300  
fax +1 704 804 5751  
[jll.com/charlotte](http://jll.com/charlotte)

**Alexandra Mann**

tel +1 704 804 5763  
[alexandra.mann@am.jll.com](mailto:alexandra.mann@am.jll.com)

**Barry Fabyan**

tel +1 704 804 5805  
[barry.fabyan@am.jll.com](mailto:barry.fabyan@am.jll.com)

**DISCLAIMER**

© 2020 Jones Lang LaSalle IP, Inc. All rights reserved. All information contained herein is from sources deemed reliable; however, no representation or warranty is made to the accuracy thereof.