

King West

Retail

For Lease

901 King Street West





Overview

901 King Street West is located on the southeast corner of King & Strachan, in close proximity to Liberty Village, and just north of the Gardiner Expressway. The opportunity features 8,756 SF of retail space (divisible) and over 250 FT wraparound corner exposure. Benefitting from the 24-hour 504 King Streetcar, a rapidly growing residential population and high pedestrian and vehicular traffic, this space is suitable for various retail uses.



Property details

GROUND FLOOR | 8,756 SF (divisible)

AVAILABLE | Immediately

NET RENT | Contact Listing Agents

ADDITIONAL RENT | \$22.46 PSF (est. 2021)

Highlights

- Corner retail opportunity at the base of a 254,000 SF mixed-use development
- Over 250 FT of wraparound corner exposure
- High ceilings and open floor plan
- Great signage and branding presence on King Street West
- Flexible demising options
- Easy access to shipping / receiving and garbage
- Ample commercial parking onsite
- TTC at front door
- 100 Transit Score and 99 Walk Score



Demographics



16,905
Population



11,437
Daytime Population



\$132,593
Avg. HH Income



\$137,678
Avg. HH Annual Spending



100
Transit Score



99
Walk Score

Within 0.5KM | Statistics Canada, 2019



Area developments

- 1

49 EAST LIBERTY
Units: 302
Completion Date: 2019
- 2

950 KING ST W
Units: 217
Completion Date: TBD
- 3

39 EAST LIBERTY
Units: 440
Completion Date: 2022
- 4

19 WESTERN BATTERY
Units: 481
Completion Date: 2022
- 5

45 STRACHAN AVE
Units: 433
Completion Date: 2020
- 6

30 ORDNANCE ST
Units: 516
Completion Date: 2019
- 7

11 ORDNANCE ST
Units: 579
Completion Date: 2021
- 8

10 ORDNANCE ST
Units: 424
Completion Date: 2021
- 9

2 TECUMSETH ST
Units: 680
Completion Date: TBD
- 10

89-109 NIAGARA ST
Units: 320
Completion Date: TBD

Neighbouring retailers

- 1

Independent City Market
- 2

Tim Hortons
- 3

Sleep Country
- 4

TD Canada Trust
- 5

Subway
- 6

Meridian
- 7

King West Vets
- 8

Starbucks Coffee
- 9

Wine Rack
- 10

RBC
- 11

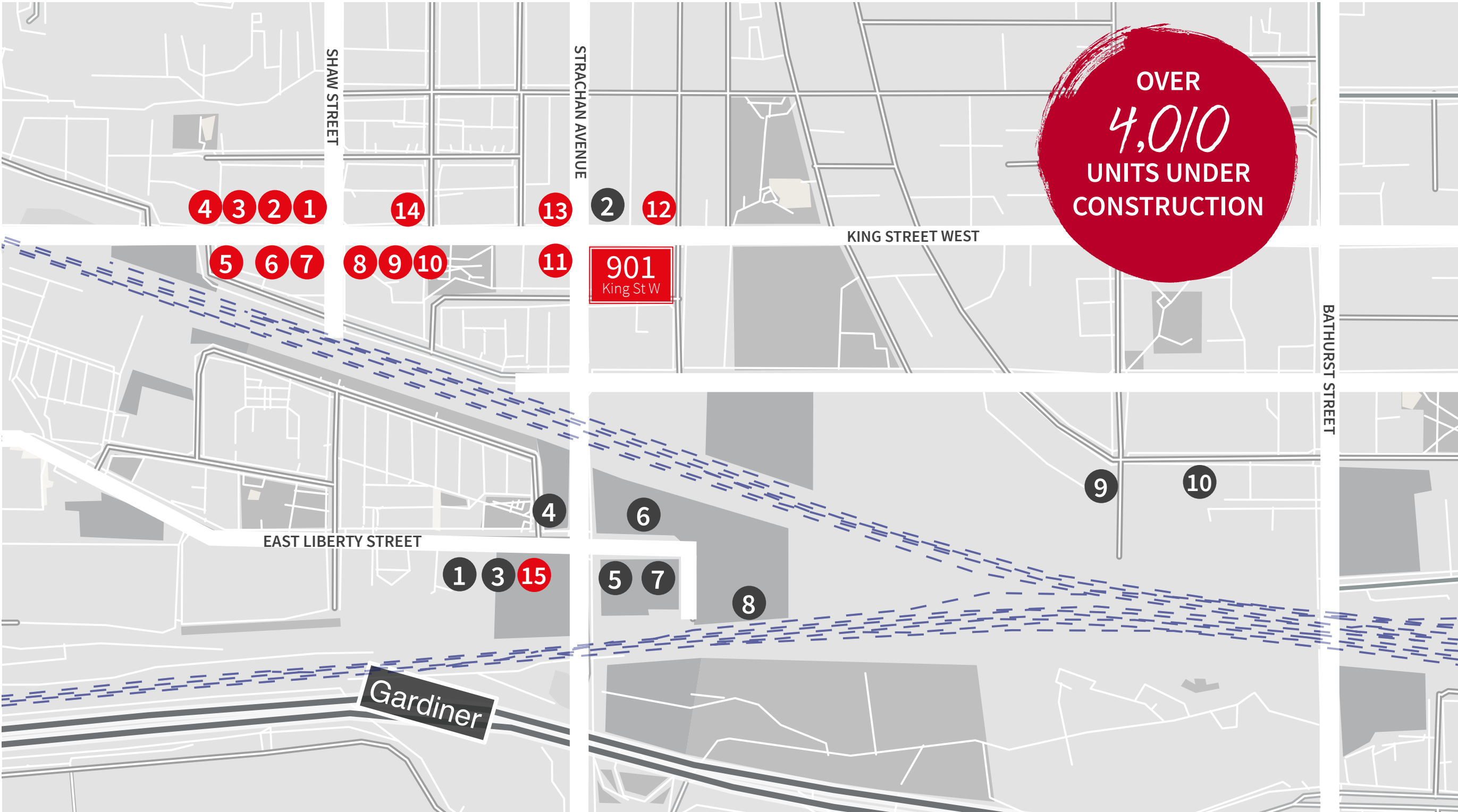
King Rustic Kitchen & Bar
- 12

Benjamin Moore
- 13

ESSO
- 14

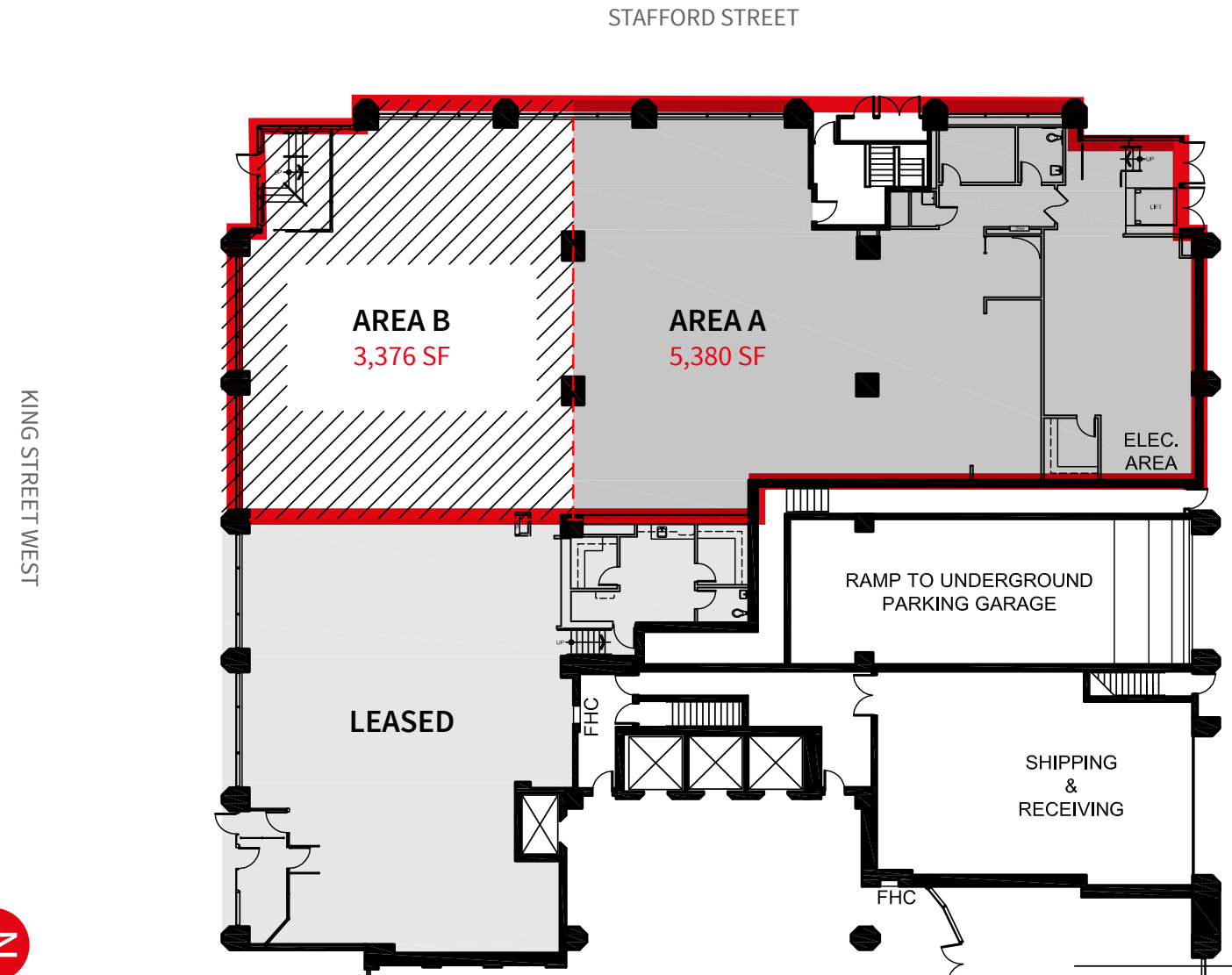
Triangle Physiotherapy
- 15

Arch Dental Centre



Floor plan

GROUND FLOOR | 8,756 SF (divisible)



FOR LEASE | 901 KING STREET WEST

Brandon Gorman*
Senior Vice President
+1 416 855 0907
Brandon.Gorman@am.jll.com

Graham Smith*
Senior Vice President
+1 416 855 0914
Graham.Smith@am.jll.com

Austin Jones*
Sales Representative
+1 416 855 0939
Austin.Jones@am.jll.com



© 2019 Jones Lang LaSalle IP, Inc. All rights reserved. All information contained herein is from sources deemed reliable; however, no representation or warranty is made to the accuracy thereof.
* Sales Representative