



WHERE **CONNECTION**  
AND **CONVENIENCE**  
**CONVERGE**

2800  
EISENHOWER





## WALK OR RIDE A SCOOTER TO YOUR FAVORITE LUNCH OR COFFEE SHOP

Easy access to I-495, minutes from the Eisenhower Avenue Metro Station, and in close proximity to many other amenities.



### AMENITIES

● RESTAURANTS

● SHOPPING

● HOTELS



## BRIGHTEN UP YOUR DAY AT THE OFFICE

- Brand new fitness center
- Micro market with fresh, daily options
- Conference room with state-of-the-art integrated technology
- 2.0 / 1,000 SF free, covered and surface parking



Wegmans

DUNKIN'



COURTYARD  
Marriott

SPRINGHILL SUITES  
MARRIOTT

SUBWAY

COLD STONE  
CREAMERY



Holiday Inn





# SIGN UP TO BE SEEN



**Over 60,000 SF**  
of contiguous space available  
on the top two floors



**Prominent signage**  
on top of building



**200K cars**  
pass daily along the  
Capital Beltway

## AVAILABILITY

Spaces ranging from 3,418 SF to 60,000+ RSF

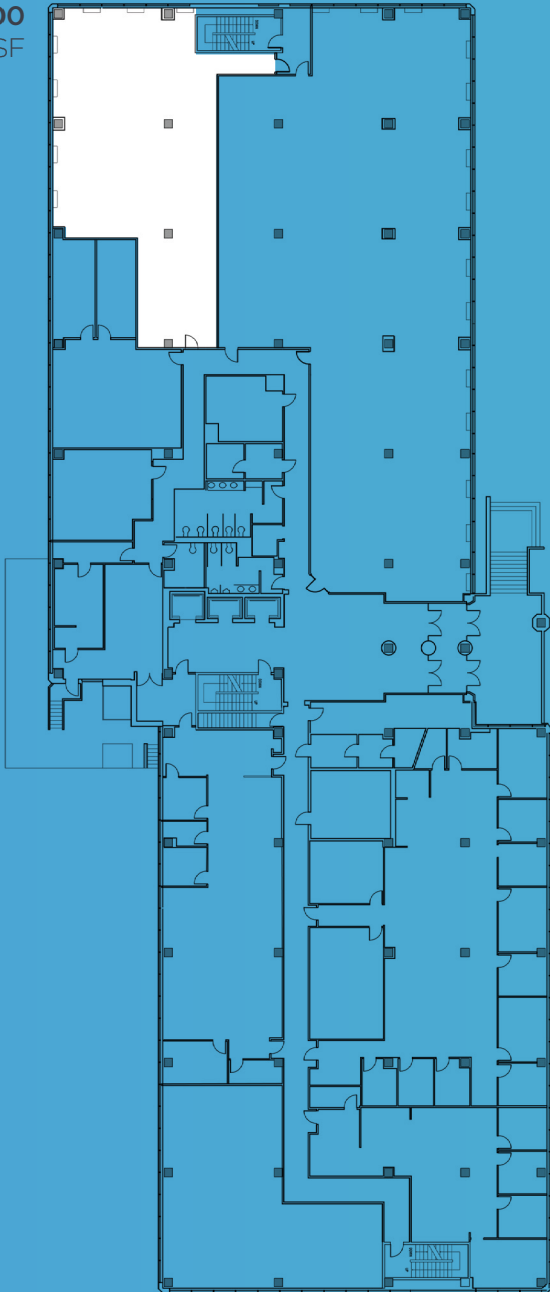
4	31,013 SF Suite 400	
3	30,599 SF Suite 300	
2	Leased	
1	Leased	3,418 SF Suite 100



# FLOOR PLANS

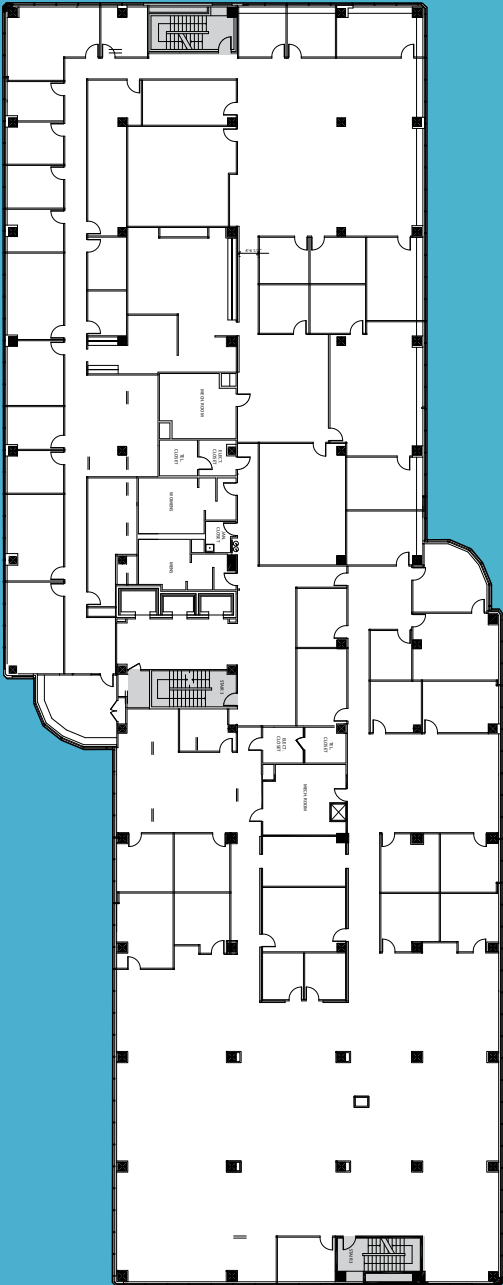
60K+ SF OF CONTIGUOUS SPACE

Suite 100  
3,418 SF



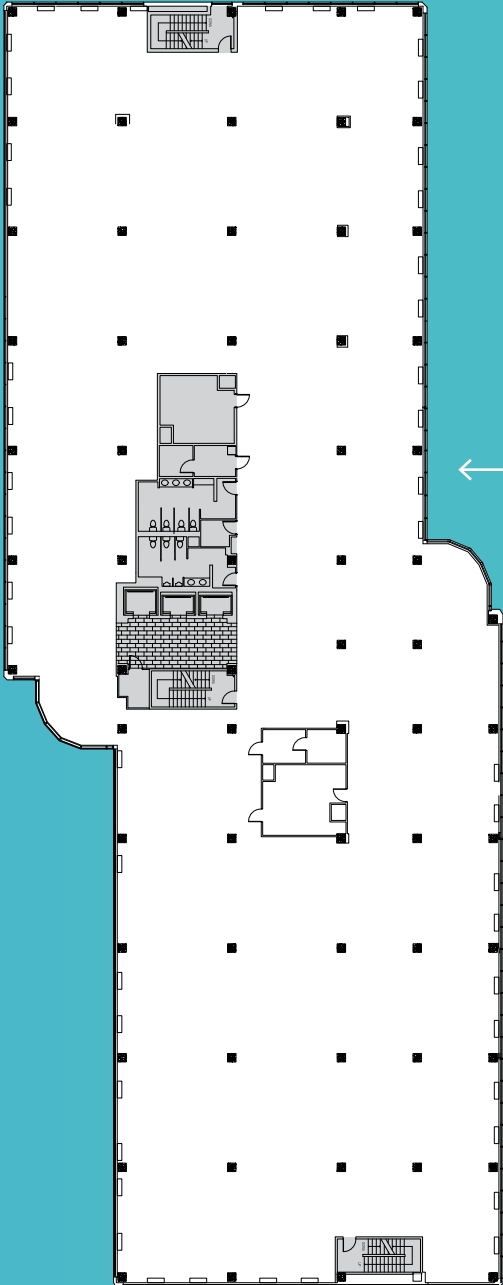
Floor 1

Suite 300  
30,599 SF  
Full Floor



Floor 3

Suite 400  
31,013 SF



YOUR  
SIGN  
HERE

Floor 4

For leasing information, please contact  
The JLL Northern Virginia Agency Leasing Team at  
**703-485-8800**

**2800**  
EISENHOWER



# 2800 EISENHOWER

For leasing information, please contact  
The JLL Northern Virginia Agency Leasing Team at  
703-485-8800

**Robert VeShancey**  
robert.veshancey@am.jll.com

**David Goldstein**  
david.goldstein@am.jll.com

**Yorke Allen**  
yorke.allen@am.jll.com

**Brian Connolly**  
brian.connolly@am.jll.com

**Matt Owens**  
matt.owens@am.jll.com

**Kristy Kettles Harman**  
kristy.kettles@am.jll.com

**AKRIDGE**  
*Invested.*

